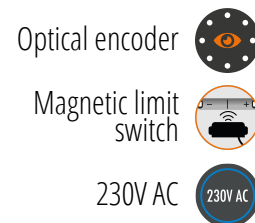


PRODUCT TECHNICAL DATASHEET

G30/1804



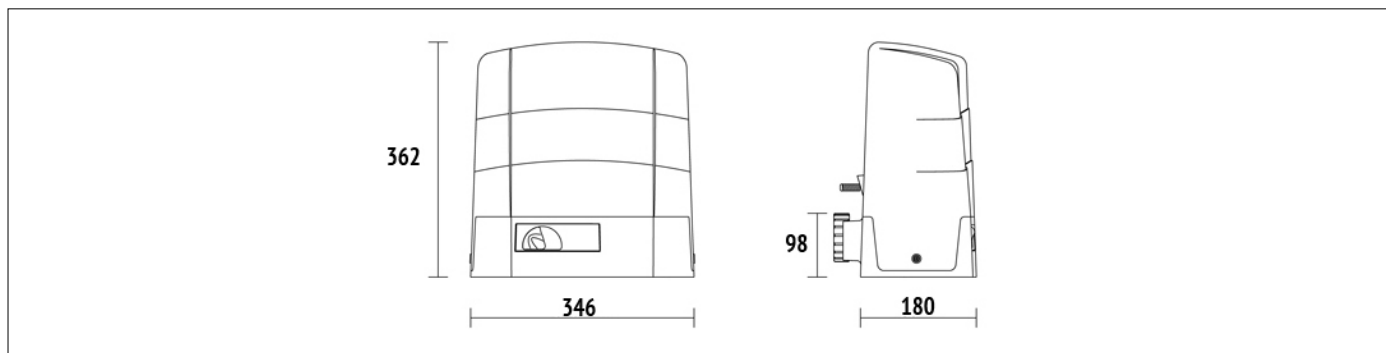
CODE	DESCRIPTION	PCS/PALLET
G30/1804	Electromechanical motor 230V AC, irreversible, ideal for sliding gates up to 1800 kg with built-in control unit H70 and optical encoder. Complete with fixing plate with tie rods and magnetic limit switch.	30

PRODUCT TECHNICAL SPECIFICATIONS	
Max gate weight	1800 kg
Power line supply	230V AC - 50Hz
Stand-by consumption	0,5W
Motor power supply	230V AC
Power rating	520W
Frequency of use	50%
Thrust	1200N
Operating temperature	-20+55°C
Protection level	IP44
Reductor Type	Irreversible
Manoeuvre speed	9.5 m/min (0.16 m/s)
Motor thermal protection	150°C
Incorporated condenser	18 µF
Limit switch	Magnetic
Onboard control unit	H70/104AC
Encoder	Optical
Type exit gear	Z17/mod 4
Maximum dimension product in mm (L x W x H)	346 x 180 x 362

Product weight packed (Kg) 19,5

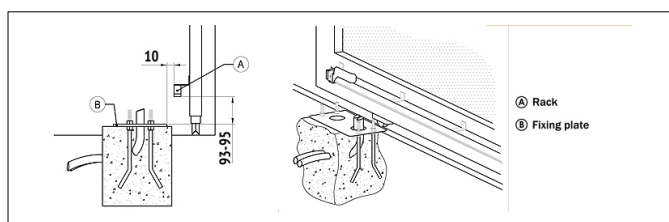
Number items per pallet/box 30

PRODUCT DIMENSIONS AND PREPARING FOR INSTALLATION

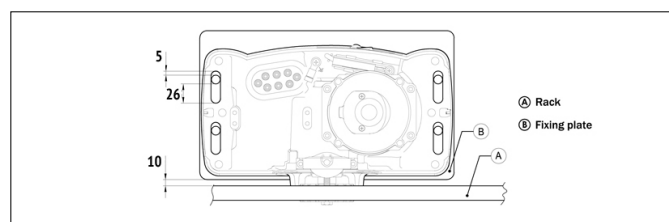


DIMENSIONS

PRODUCT PREPARING FOR INSTALLATION



PREDISPOSITION FOR STANDARD INSTALLATION



PRODUCT ACCESSORIES



KT222
Raised fixing plate for G30 series
(+3,5 cm).



GA550
Galvanised steel rack 22x22x1000,
module 4.



GA551
Galvanised steel rack 30x12x1000,
module 4, complete with spacers and
screws.



GA554
Pocket of 6 spacers (2,5 cm) with
screws.



GA557
Roger Technology nylon rack, module
4 to 6 connectors, L.1000.



LT328
Pinion Z17 mod. 4 Increased
thickness H.38 for series BG30 - G30
- TW110 - R30 - E30 (except
BG30/804/HS - BG30/1504/HS -
TW110/1000/HS).



LT331
Pinion Z11 mod. 6, only for series
BG30 - G30 - TW110 (except
BG30/804/HS - BG30/1504/HS -
TW110/1000/HS).